

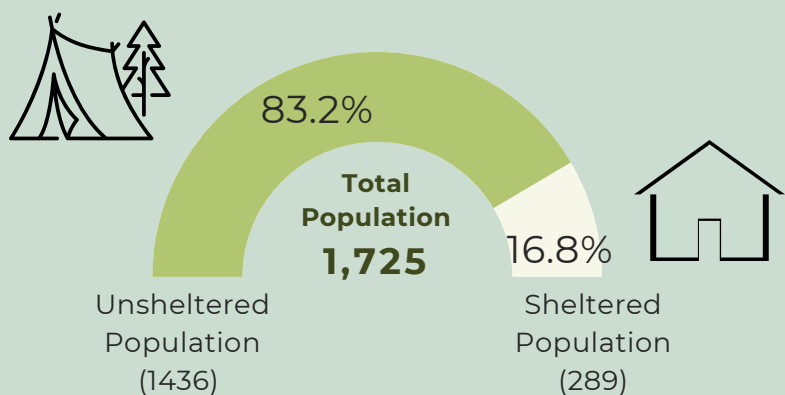
SOLANO COUNTY

Homeless Census & Survey 2024

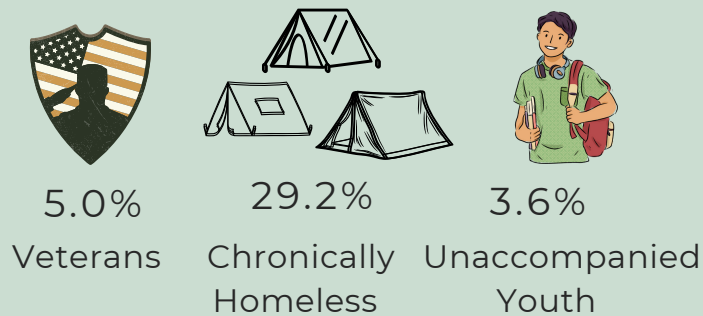
Executive Summary

The Point-In-Time Count is a national initiative to quantify the extent of homelessness and to gather details on the characteristics of people experiencing homelessness.

The 2024 Solano County Point-in-Time Count was a communitywide effort conducted on January 31, 2024. For this snapshot in time, it is estimated that there were 1,725 people either in shelters or living on the streets of Solano County.

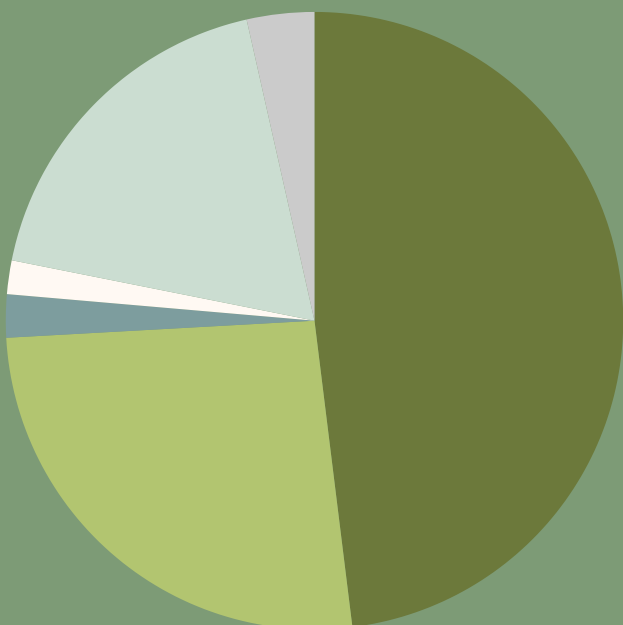


SUBPOPULATIONS

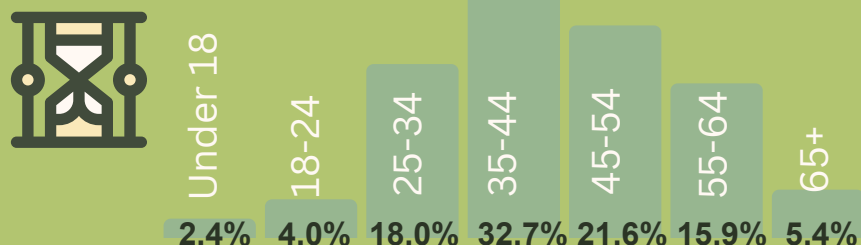


RACE & ETHNICITY

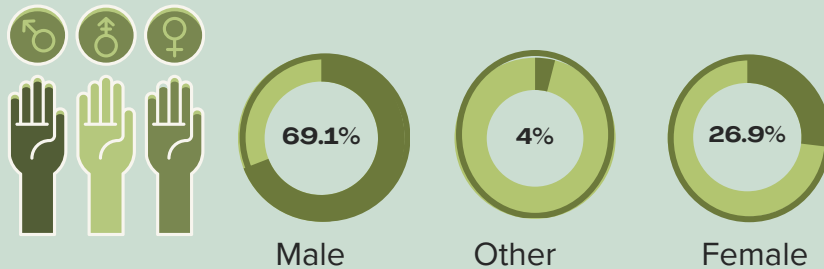
- White - 49%
- Black/African American - 26.6%
- American Indian/Native Alaskan - 2.3%
- Native Hawaiian/Pacific Islander - 1.8%
- Hispanic/Latin(a)(o)(x) - 18.7%
- Multiple Races - 3.6%



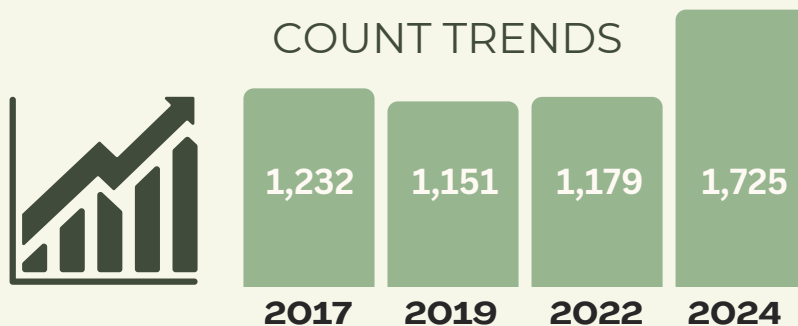
AGE DEMOGRAPHICS



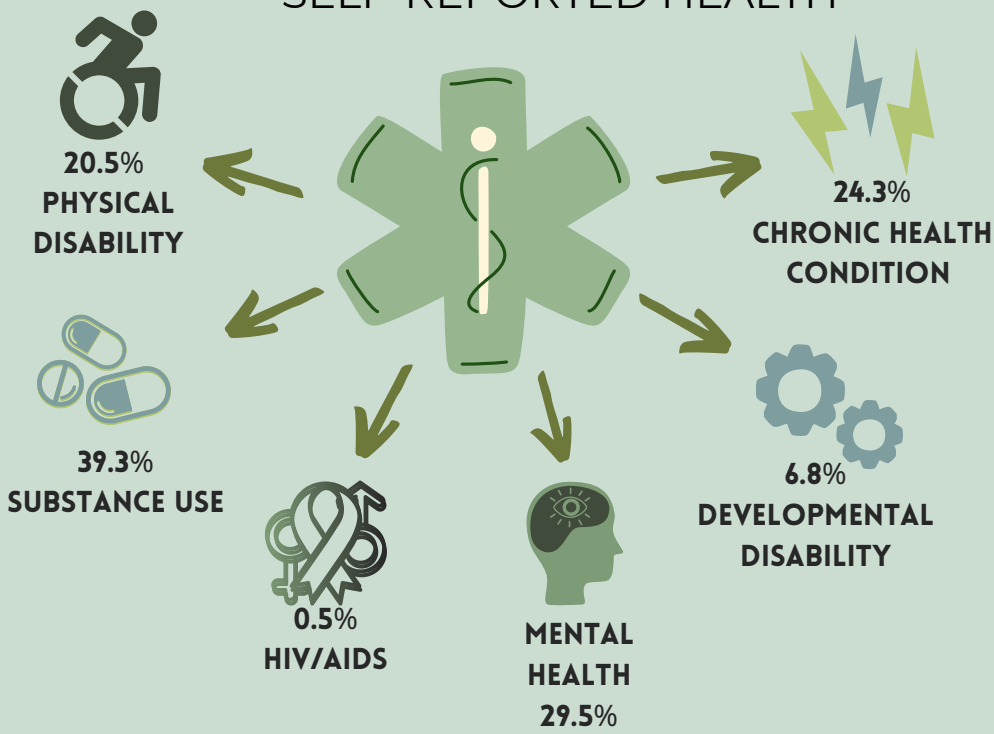
GENDER



COUNT TRENDS



SELF-REPORTED HEALTH



46.0% of people counted reported having at least one disability preventing them from obtaining employment and maintain permanent housing.



People experiencing homelessness stay on average 4 days (36%) longer per hospital admission.

SHELTER CAPACITY



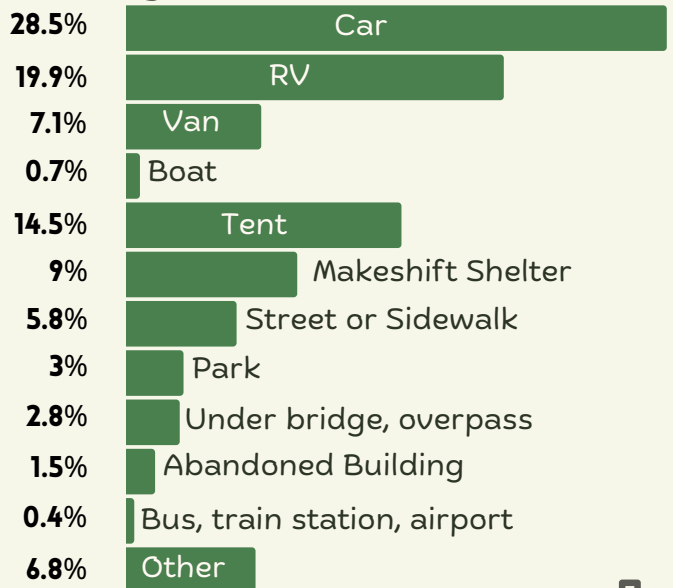
169 (90.4%) Emergency Shelter beds were utilized out of 187 total beds

120 (99.2%) Transitional Housing beds were used out of 121 beds.

SLEEPING LOCATION



Where did you sleep during the night of the count ?



REGISTERED VOLUNTEERS

216 registered volunteers organized into 7 regions assisted with the 2024 Count, up from 130 in 2022

7 REGIONS



*CHRONICALLY HOMELESS

Has been continuously homeless for 1 year or more and/or;

An individual with one or more disabling conditions or a family with a head of household with a disabling condition who:

- Has experienced 4 or more episodes of homelessness within the past 3 years
- An individual with one or more disabling conditions or a family with a head of household with a disabling condition who:

^ Multiple response question, results may not add up to 100%

+ Only displaying top responses

Note: Some percentages have been rounded so total percentage will equal 100%